

How to Properly Remove a USB Storage Device (flash drive, pen drive, jump drive, cruiser, etc...)



The come in all shapes and sizes... and different storage capacities from 16 meg →1 gig!

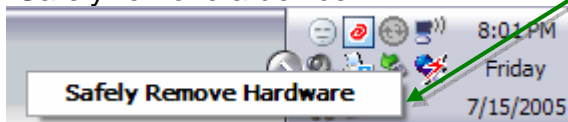
But to take care of your new little storage device, you must remember to remove it properly. When a USB device is plugged into a computer, the system polls it every few seconds, to see if it needs attention and if it is still there. If you pull the device out without properly warning the system you might destroy the data or the device.

1. In the lower right corner of your desktop are a series of icons of devices and programs that are currently running behind the scenes.

2. The tiny icon that looks like a green arrow over a device is very important to the maintenance of any device hooked via USB



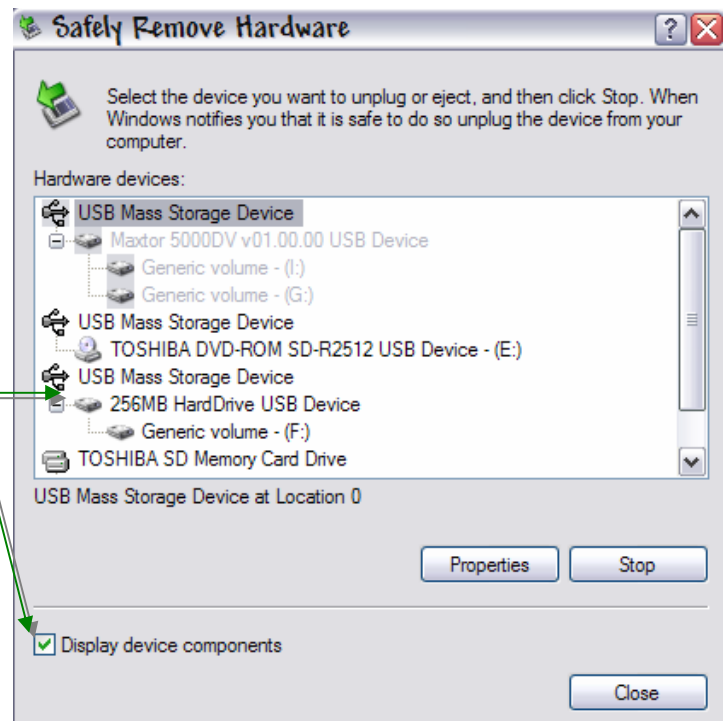
3. If you right click the object will likely get a pop-up to "Safely remove a device"



4. You can either left click to confirm → OR if you have several devices, you will get the following...

5. Select "Display Device Components"

6. Then Select your device and click "STOP" – You may get an additional screen with several views of the same device – select OK for any



7. 